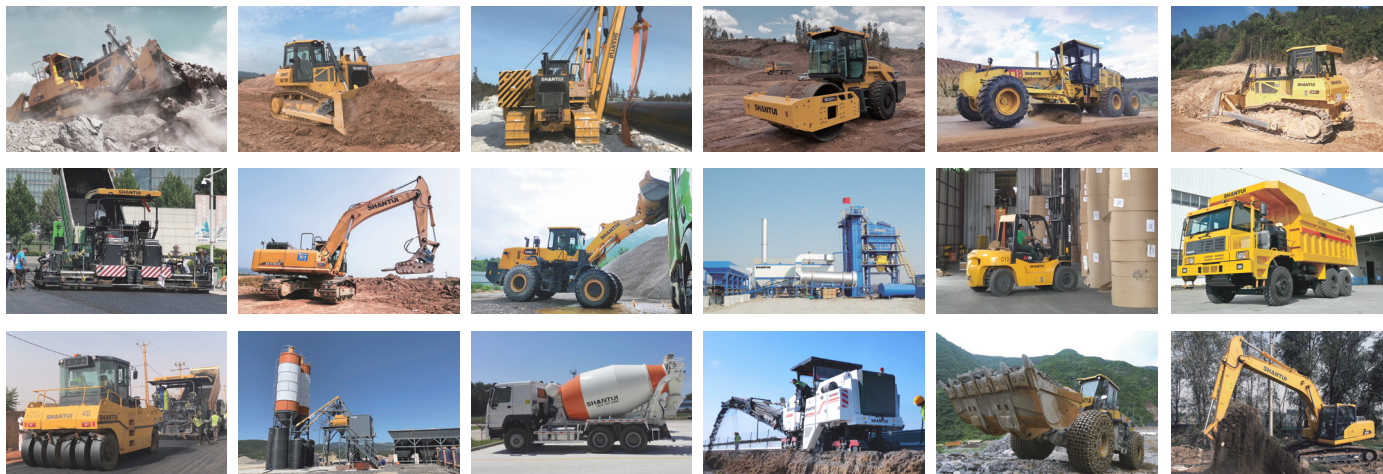


VALUE THAT WORKS

GROUP PRODUCTS



SHANTUI

SE26SR/SE27SR

Mini Excavator



Engine Model: YANMAR 3TNV80F
Gross Power: 14.6kW/2400rpm
Operating Weight: 2700kg/2800kg

High Performance in a Compact Design



Shantui Social

SHANTUI CONSTRUCTION MACHINERY CO., LTD.
ADD: No. 58, G327 Highway, Jining City, Shandong, CHINA
TEL: +86-537-2909369
FAX: +86-537-2311219
EMAIL: trade@shantui.com
WEB: www.shantui.com

SHANTUI

WALK-AROUND

LED LIGHT



HIGH SAFETY FOUR POST CANOPY
(CAB OPTIONAL)



AUXILIARY PIPING



• The excavator standard comes with one set of auxiliary pipelines, and can also be equipped with a second set of auxiliary pipelines as optional to meet the requirements of various attachments.

ENGINE



• Equipped with Japan Yanmar engine, meeting emission standards for Euro V, North America EPA 4, and national IV non-road mobile machinery, which is energy saving and environmental protection with strong power. The load sensing system ensures fast response, superior control and high efficiency.

OFFSET BOOM



TELESCOPIC TRACK



• The travel motor has an automatic speed control function, so the travel efficiency is higher.



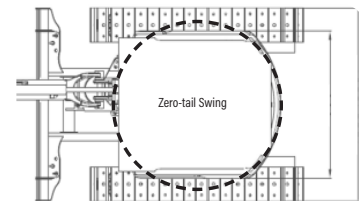
HIGH PERFORMANCE IN TIGHT CONDITIONS

A COMPACT MODEL WITH HIGH PERFORMANCE

SE26SR with OPG/TOPS canopy (cab) provides excellent visibility, stability, optimal comfort, and safety. For tough jobs in tight corners that demand precision control and state-of-the-art performance. SE26SR is ready to work, offering following advanced features: Zero-tail swing, hydraulic retractable undercarriage, boom swing, foldable dozer blade. Featuring high reliability, low operating cost, and superior efficiency, and you've got the ideal mini for a wide range of modern jobs.

Zero-tail Swing

With zero-tail swing, even the tightest space becomes an efficient work place. The tail always stays within the width of the tracks (when extended) and lets you turn the canopy throughout its 360-degree turning radius with complete confidence and safety. Starting point by developing our zero-tail SE26SR/SE27SR, balance, fast and smooth operation was our main target. It results in a compact excavator with excellent balance and comes to its full potential in urban environments, landscaping, and small demolition in and outside buildings.



Boom Swing

The left and right boom swing angle supports complex operating conditions like parallel wall digging or working in narrow spaces.

Auxiliary piping

Auxiliary piping is standard. A second set of auxiliary piping is also available as an option. It can meet the configuration of various attachments.



OPERATIONAL COMFORT



LARGE OPERATOR ENVIRONMENT WITH ERGONOMIC CONTROL LAYOUT

The SE26SR/SE27SR provides an uncompromised operator environment – which, together with excellent visibility, provides unmatched operator comfort and safety. This machine is built around the operator – providing optimal ergonomics for operators of all sizes. SE27SR is equipped with cab with large space, wide view, reasonable arrangement of manipulation devices, convenient and comfortable operation.



The 7-inch intelligent touch screen is used to integrate rich functions. And fuller and more intelligent human-computer interaction is also realized to enhance the operating experience.

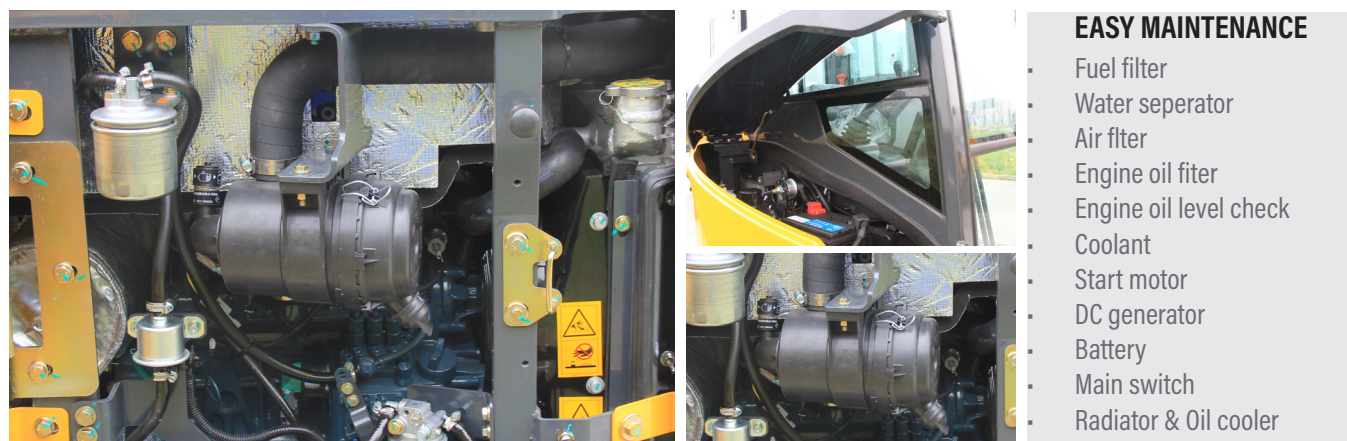


The dashboard position is more ergonomically designed to make it more convenient and comfortable to use.

EASY ACCESS FOR MAINTENANCE

EASY SERVICE ACCESS

SE26SR/SE27SR is developed with taking particular attention to ease of service access. With a single access point for the daily maintenance of all main components, fuel level gauge and refuelling through the lockable cap.



The SE26SR/SE27SR is designed for lower maintenance cost with longer service intervals- resulting in more machine availability on-site. Meanwhile, skilled SHANTUI-trained technicians are available to provide extra support when needed.

OPTIONAL ATTACHMENT



RIPPER



COUPLER



HYDRAULIC BREAKER



SHEAR



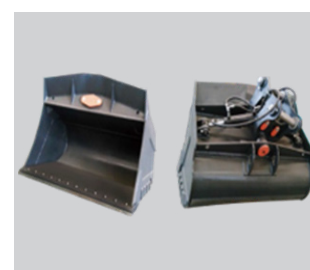
GRAPPLE



SKELETON BUCKET



CLAMSHELL

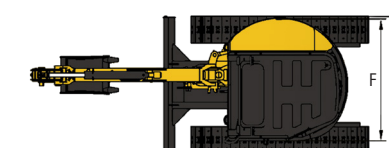
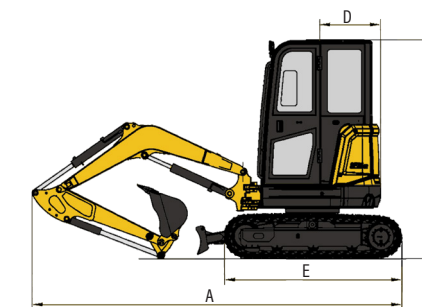


TILT BUCKET

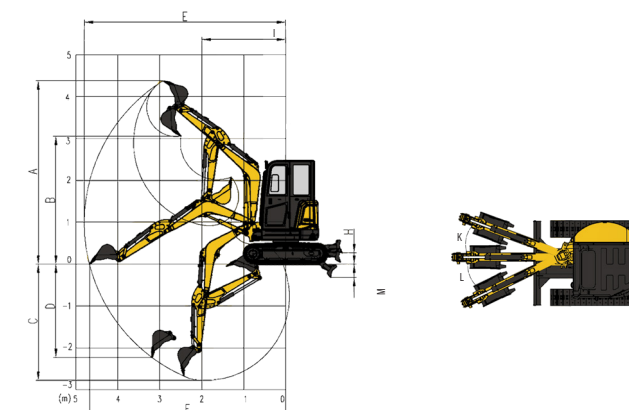
SPECIFICATIONS

ENGINE	
Model	3TNV80F
Type	3 cylinders, direct injection
No. of cylinder	3
Emission	EPA Tier 4 Final/Europe Stage V
Displacement	1.267L
Power output	14.6kW/2400rpm
HYDRAULIC SYSTEM	
Type	Variable plunger pump
Operating flow	86.4L/min
Operating pressure	24.5MPa
DIGGING FORCE (ISO6015)	
Bucket digging force	24kN
Arm digging force	14.8kN
BUCKET	
Type	Backhoe bucket
Bucket capacity	0.065 m ³
Bucket width	460 mm
TRAVEL SYSTEM	
Type	Plunger motor
Track roller	2×3
Track shoes	2×42
Travel pressure	24.5MPa
Travel speed	2/3.1km/h
Max. Drawbar pull	29kN
Grade ability	≤30°
SWING SYSTEM	
Swing motor type	Plunger motor
Swing pressure	23MPa
Swing speed	0-10r/min
Brake type	Pressure release mechanical braking
REFILLING CAPACITIES & LUBRICATIONS	
Fuel tank	33L
Cooling system	5L
Engine oil	3.4L
Hydraulic oil tank	22L
System Capacity	32L
OPERATING WEIGHT AND GROUND PRESSURE	
Shoe width	300mm
Ground pressure	26.3kPa/27.3kPa
Operating weight	2700kg/2800kg

DIMENSIONS		mm
A	Overall length	4200
B	Overall height(top of canopy)	2480
C	Overall width	1550
D	Tail swing radius	775
E	Undercarriage Length	2020
F	Upperbody width (zero tail)	1400



WORKING RANGE		mm
A	Max. digging height	4390
B	Max. dumping height	3060
C	Max. digging depth	2800
D	Max. vertical digging depth	2310
E	Max. depth cut for 2440m(8')Level Bottom	2315
F	Max. digging distance at ground level	4680
I	Min. turning radius of working device	2015
H	Max. lifting height of shovel	300
K	Right offset of boom	565
L	Left offset of boom	615
M	Max. cutting depth of shovel	320



* The specifications are subject to change without notice. The pictures may include options. The actual color & appearance of the product may differ from what is shown.